

---

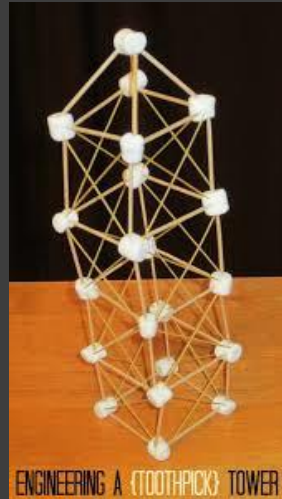
WHAT IT'S LIKE TO HAVE A

**GROWTH  
MINDSET**

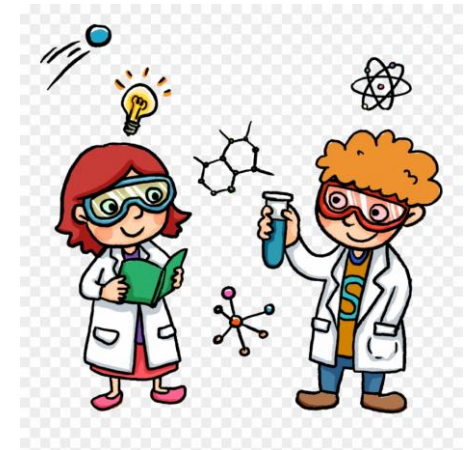
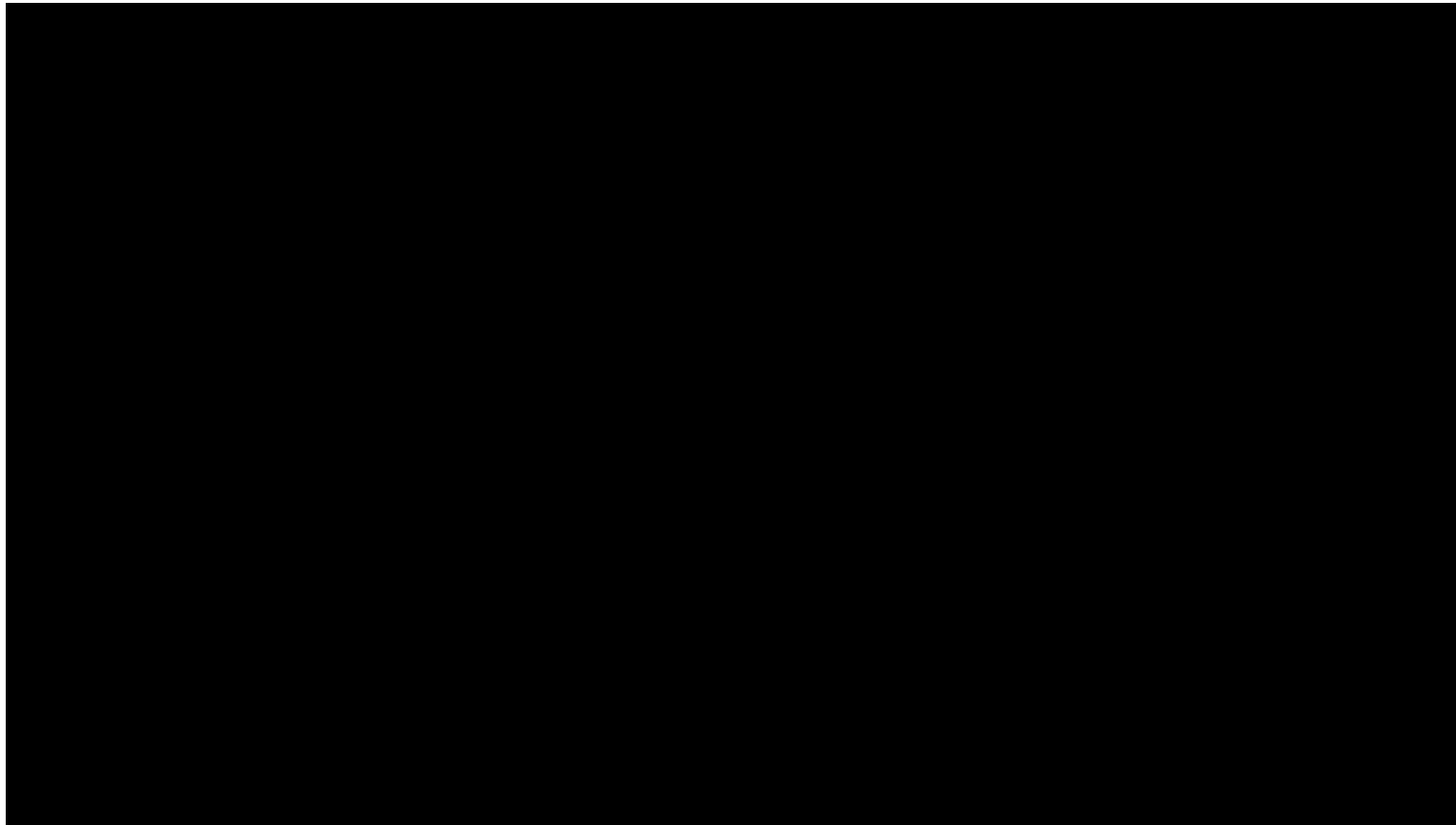
# HAVING A GROWTH MINDSET

## \*THINK AND TALK\*

- Think and talk about building your marshmallow tower.
- Share what you loved about it and what you struggled with.
- Did you make any mistakes while building your tower?
- Did those mistakes help you grow in your success in building a new tower?



TODAY WE WILL BE READING A NEW BOOK *ADA TWIST, SCIENTIST* BY ANDREA BEATY. CLICK ON THE PICTURE BELOW TO WATCH THE VIDEO



BE SURE TO  
THINK ABOUT  
YOUR  
EXPERIENCE  
BUILDING  
YOUR TOWER  
WHILE  
WATCHING!

DURING THE VIDEO READ ALOUD, MAKE SURE YOU ARE DISCUSSING THESE QUESTIONS WITH YOUR CHILD. JUST BRIEFLY DISCUSS AND SHARE YOUR ANSWERS WITH ONE ANOTHER.

What are some of Ada's questions?

What are some of Ada's traits that make her a good scientist?

What was the question Ada was trying to figure out the answer to?

How did Ada try to answer her question?

Was trying to answer Ada's question easy or difficult?

What were some of the mistakes Ada made?

Did Ada find a final answer to her question?

Does that mean she failed?

How did Ada fail well?

Do scientists need to fail well to find results?



---

AFTER GOING  
OVER THE  
QUESTIONS  
DURING THE READ-  
ALoud, COME  
BACK TO THE  
QUESTION OF,  
“DO SCIENTISTS  
NEED TO FAIL  
WELL?”

DOES A SCIENTIST NEED TO FAIL WELL?

WHY OR WHY NOT?



# FLIPGRID QUESTIONS!

Students address next year's first graders on Flipgrid telling them all that they have learned about the need for a growth mindset in first grade and how important a growth mindset is for scientists and engineers.

- What does it mean to have a growth mindset ?
- What does it mean to fail well?
- What are some of the ways that you have failed well in first grade?
- Why is it important for us to sometimes make mistakes as we try out new ideas?
- How are our mistakes like those made by scientists and engineers show that we are all failing well?



---

ON FLIPGRID, ADDRESS NEXT YEAR'S FIRST GRADERS AND ANSWER THE QUESTIONS ON THE PREVIOUS SLIDE AS WELL AS "WHY IS IT NECESSARY FOR A SCIENTIST TO FAIL WELL?"

SCAN THE QR CODE  
ON THE FLIPGRID  
APP TO ACCESS THE  
GRID

